

VERSCHATTUNGSSTUDIE 1 - SW

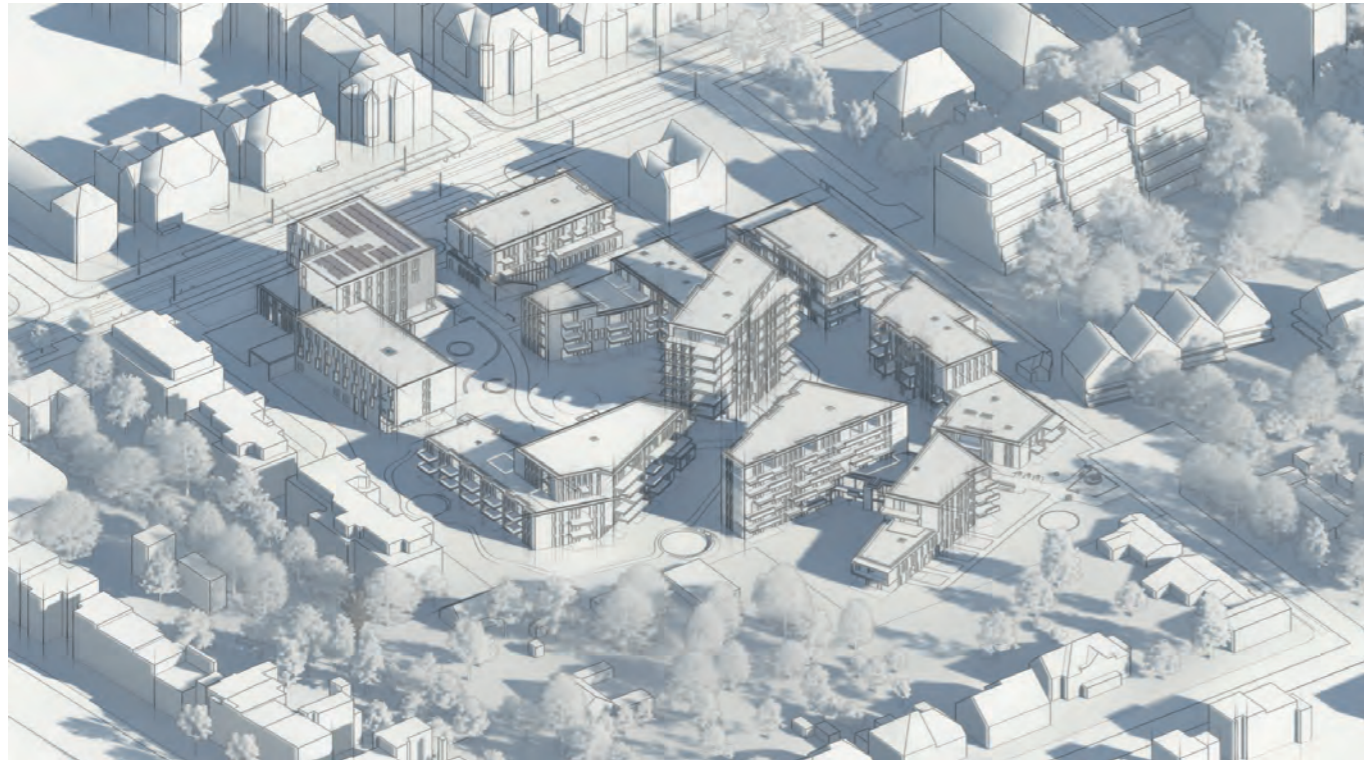
Vorhabenbezogenen Bebauungsplan
Nr. 841 (V) - „Südlich Uerdinger Straße“

Verfasser:
formA Architekten
Lebá Rübsamen Partnerschaft mbB
Spichernstraße 38
50672 Köln
Ansprechpartner:
Herr Wolf Lebá
Herr Helmut Rübsamen

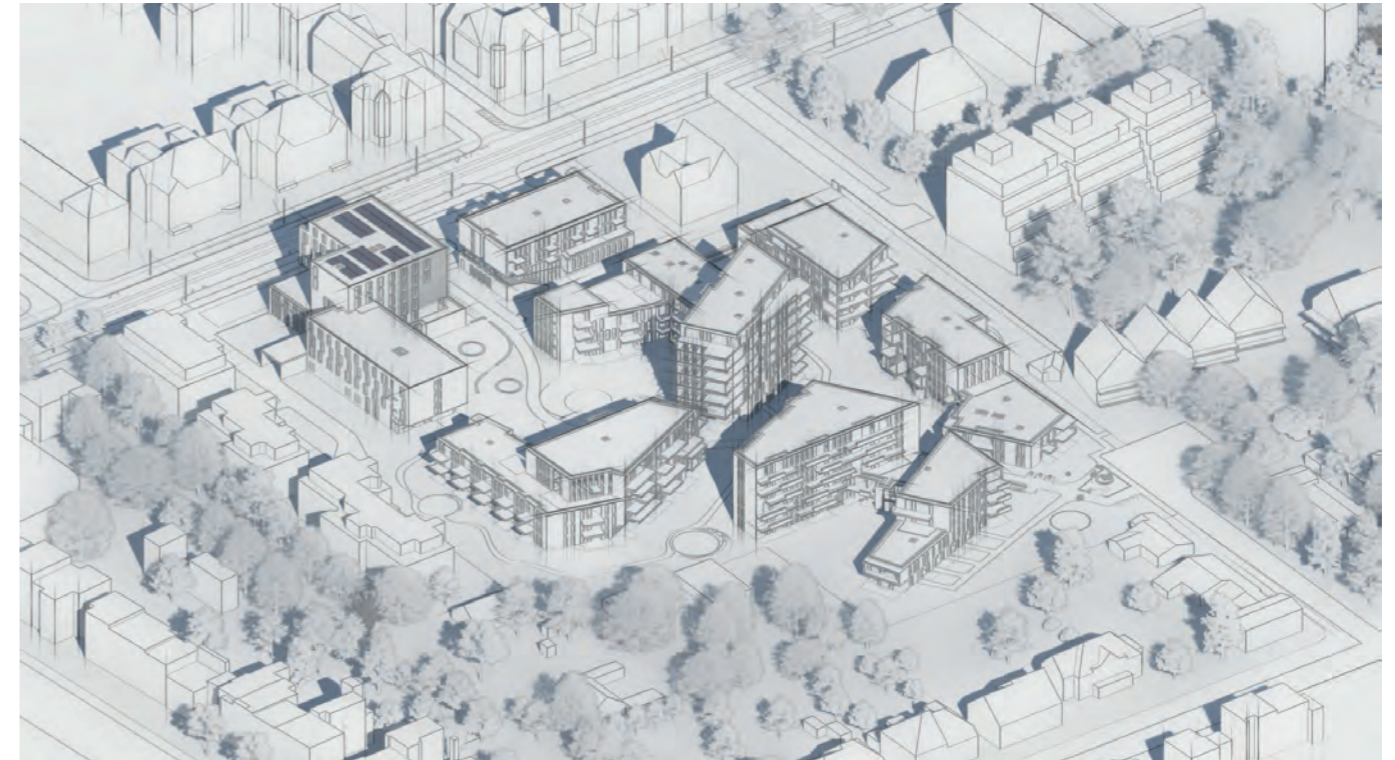
Stand: Januar 2023

**Allen Untersuchungen liegen die GPS-Geodaten der Stadt Krefeld
51° 20' 19,68'' N / 6° 35' 7,08'' E
zugrunde**

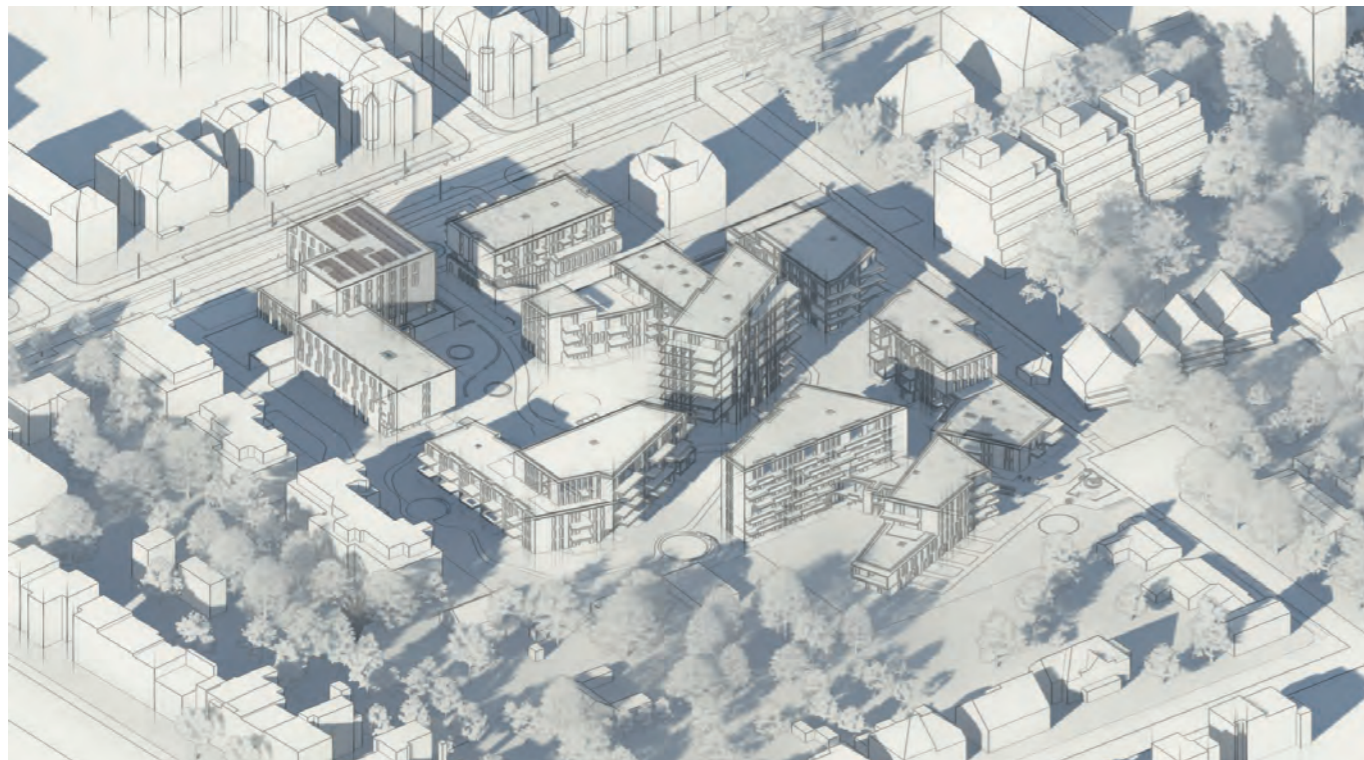
hergestellt mit:
ALLPLAN 2022/ LUMION 11 in isometrischer Darstellung



10 Uhr



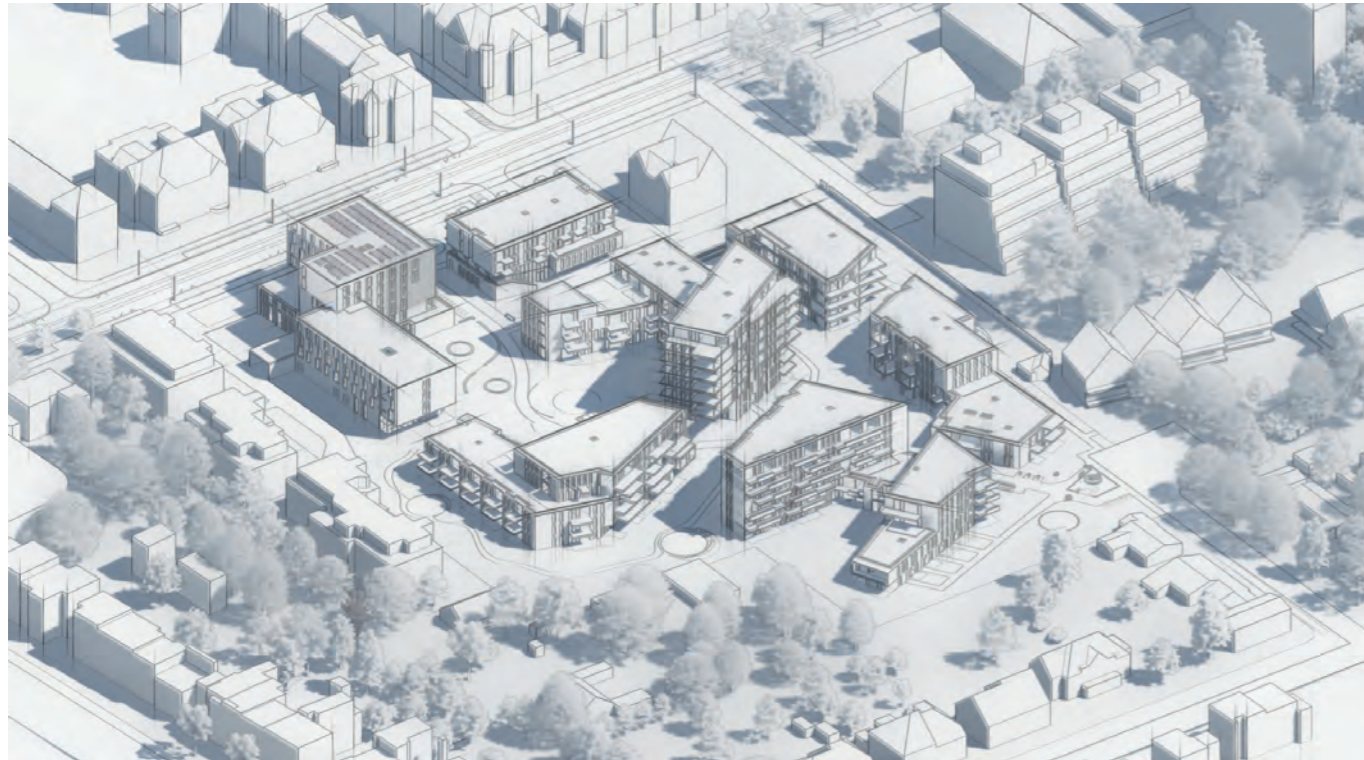
13 Uhr



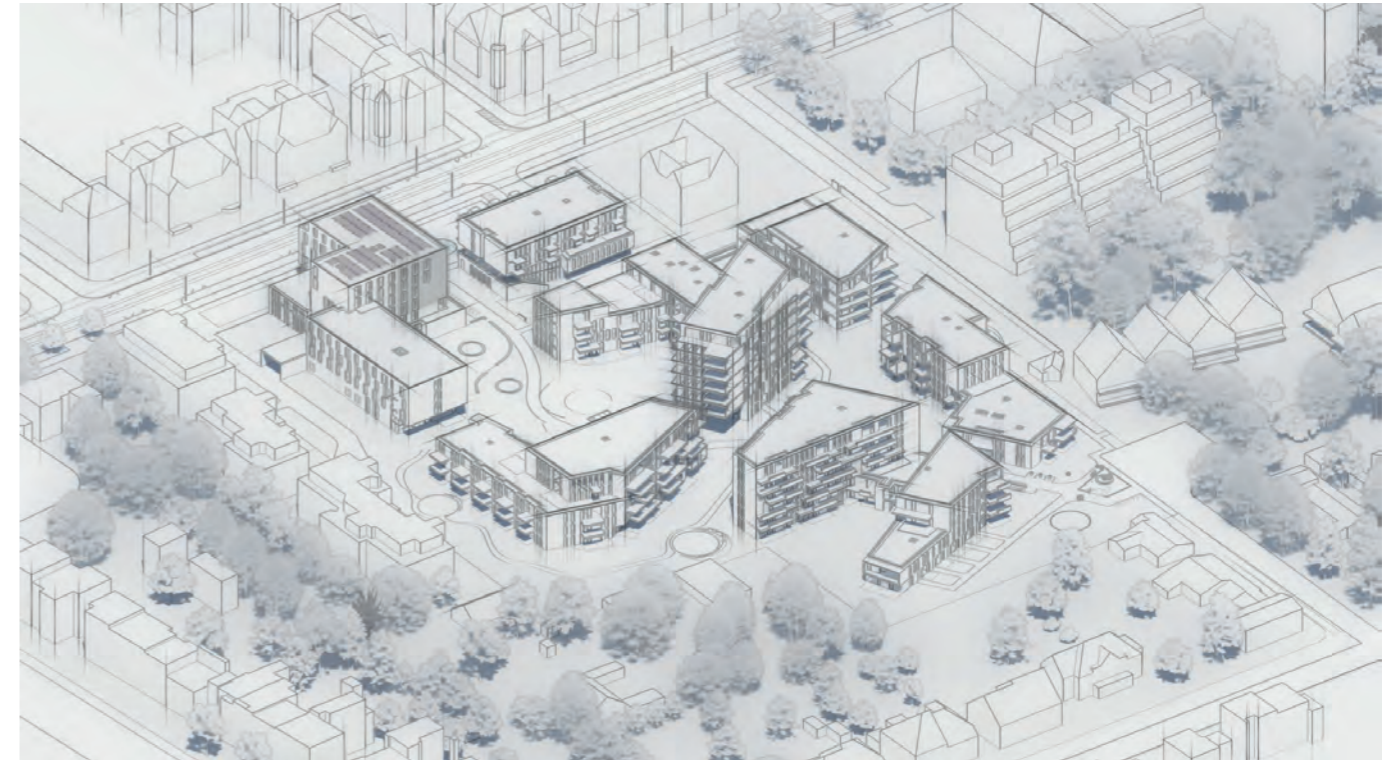
16 Uhr

Verschattungssituation, isometrisch
Uerdinger Straße 245, 47800 Krefeld
51° 20' 19,68'' N / 6° 35' 7,08'' E

1. MÄRZ



10 Uhr



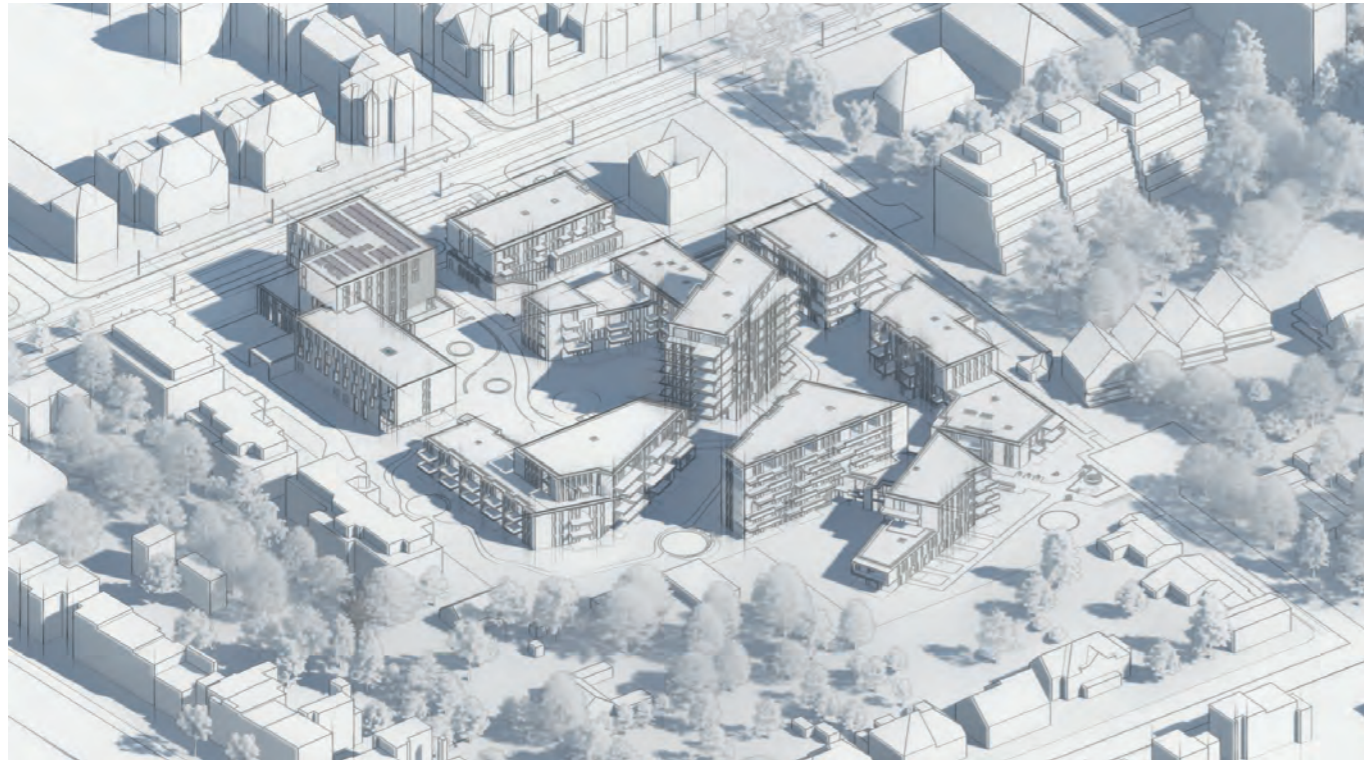
13 Uhr



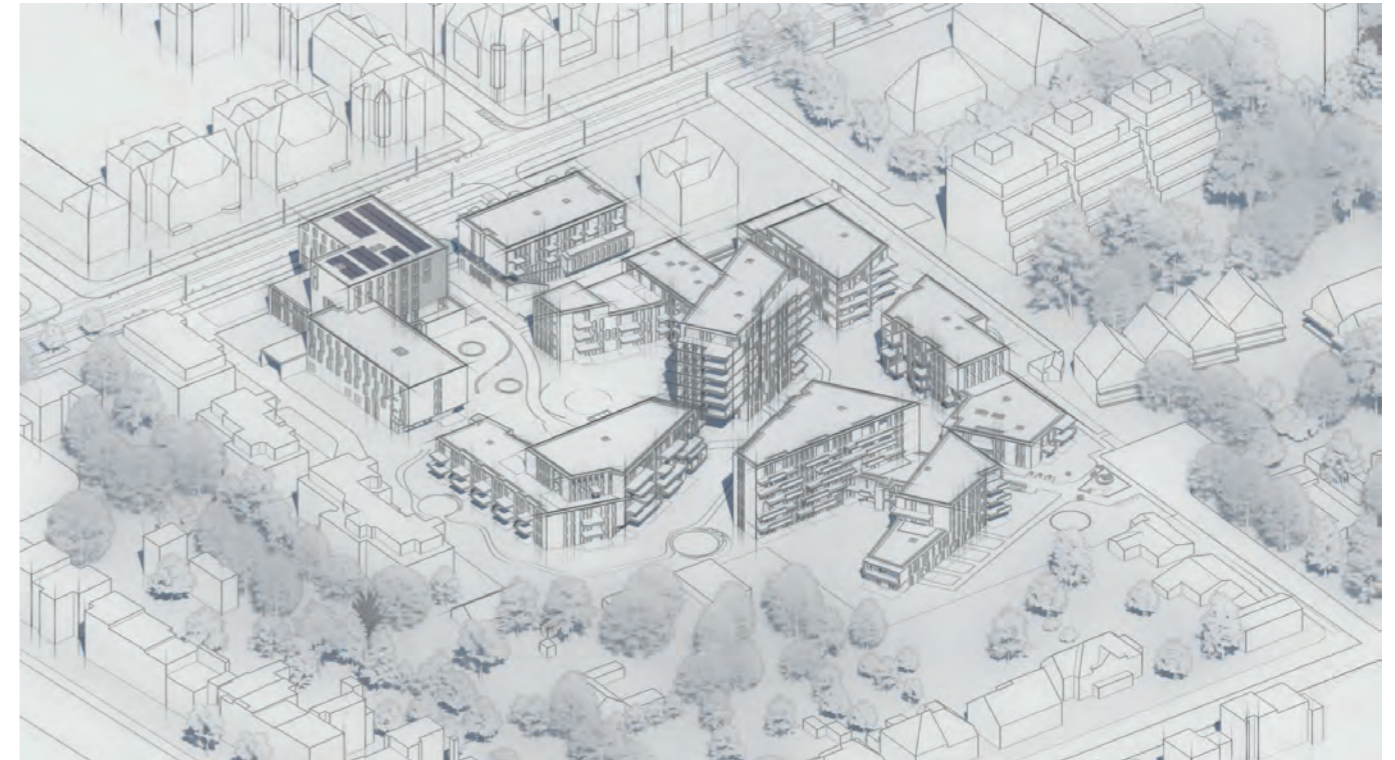
16 Uhr

Verschattungssituation, isometrisch
Uerdinger Straße 245, 47800 Krefeld
51° 20' 19,68'' N / 6° 35' 7,08'' E

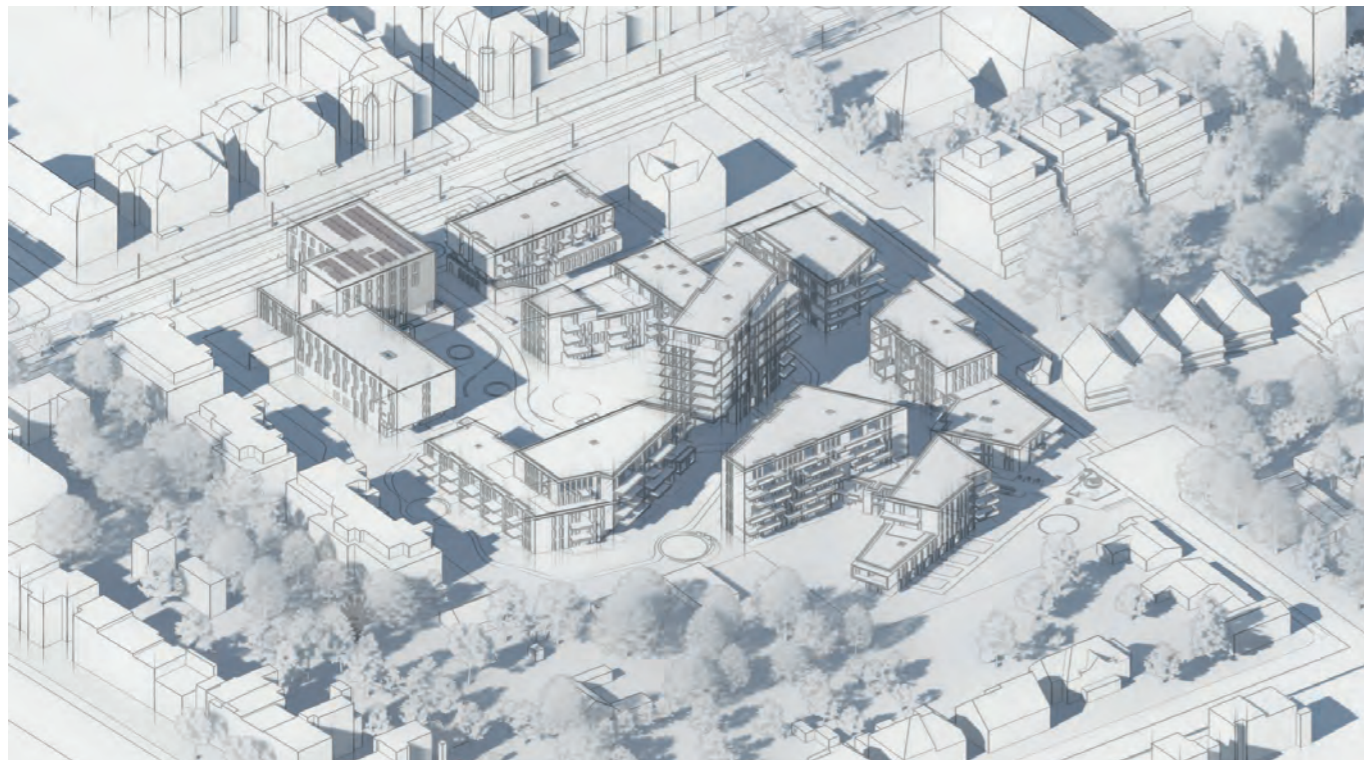
1. JUNI



10 Uhr



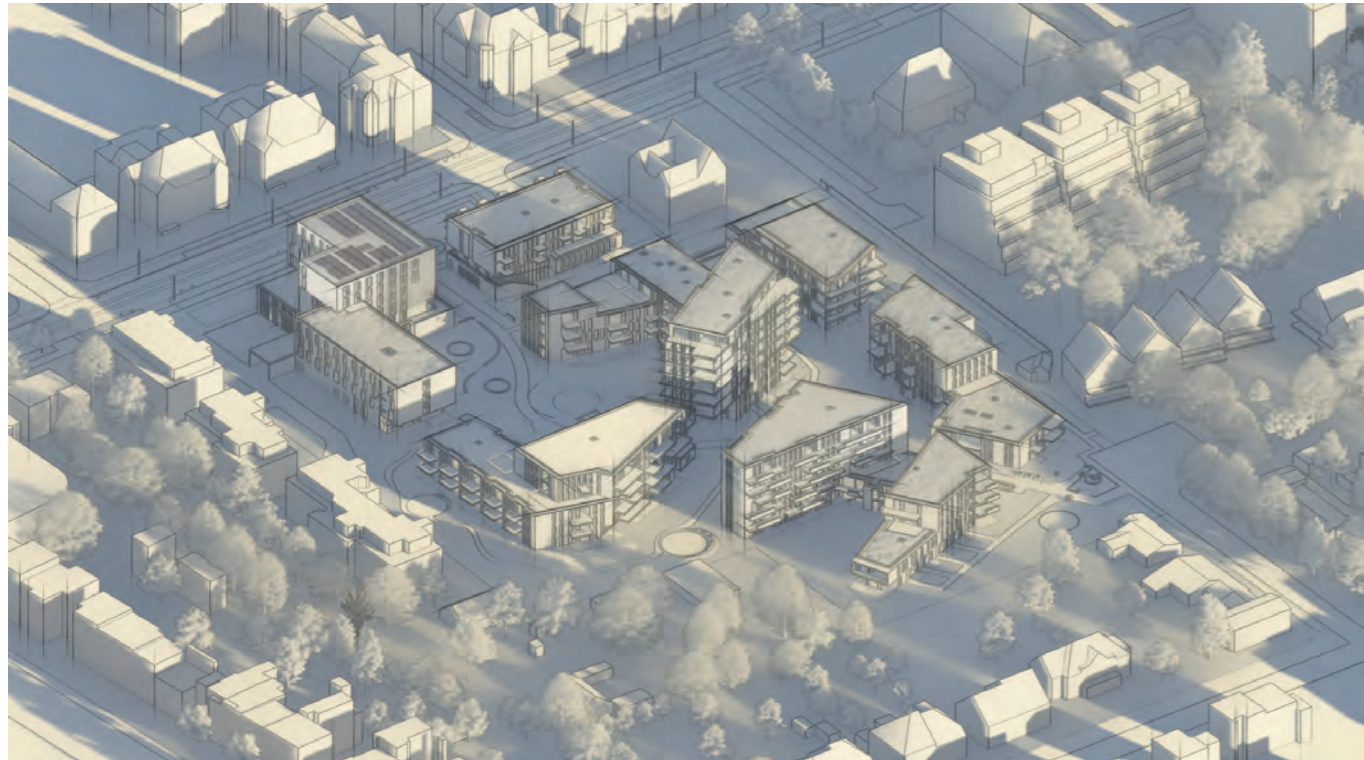
13 Uhr



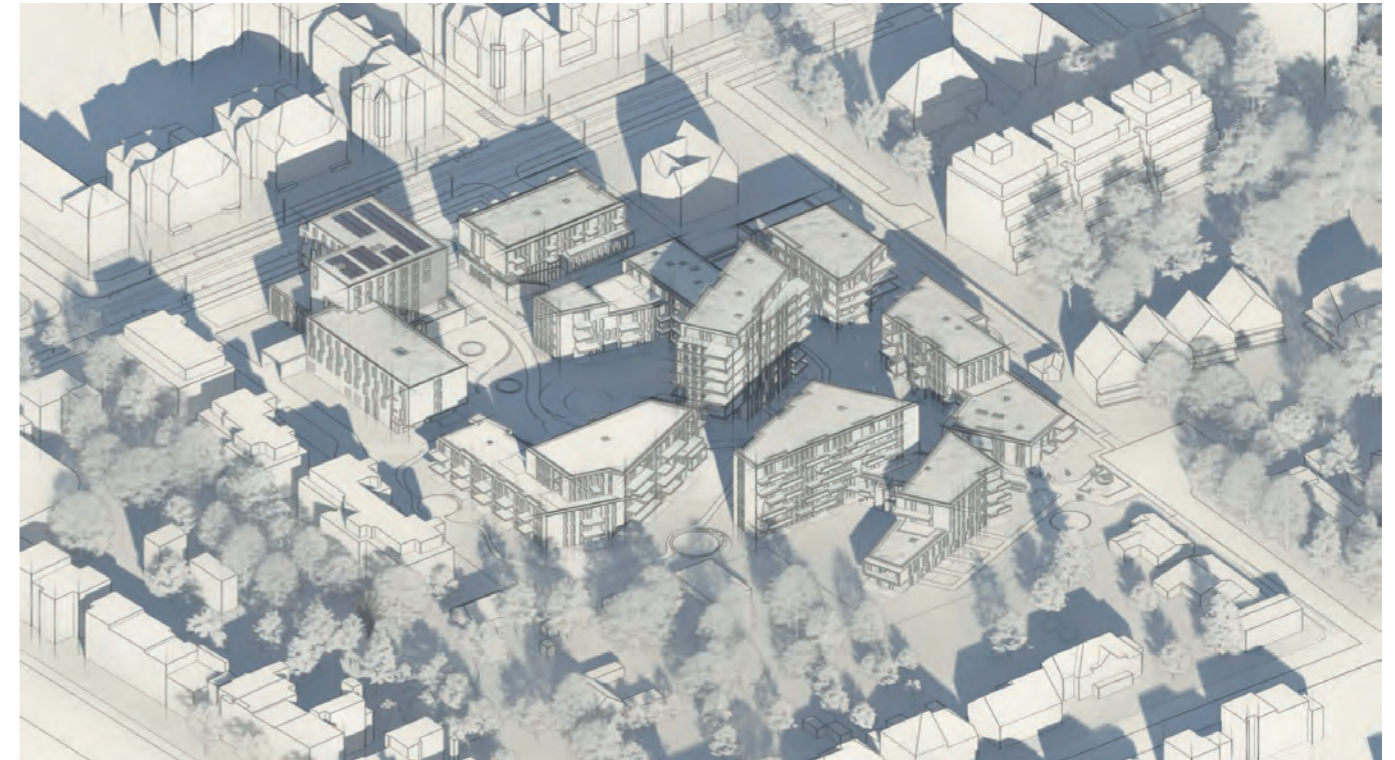
16 Uhr

Verschattungssituation, isometrisch
Uerdinger Straße 245, 47800 Krefeld
51° 20' 19,68'' N / 6° 35' 7,08'' E

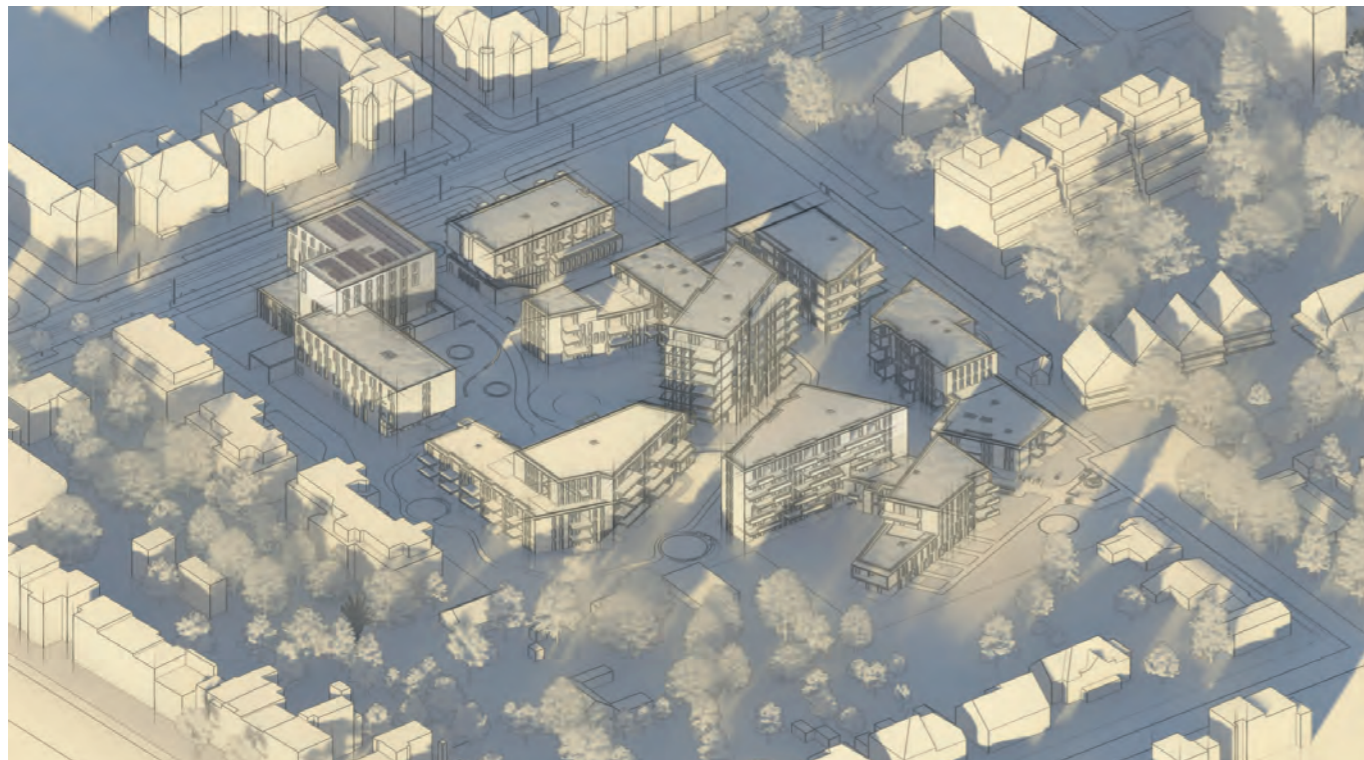
1. SEPTEMBER



10 Uhr



13 Uhr



16 Uhr

Verschattungssituation, isometrisch
Uerdinger Straße 245, 47800 Krefeld
51° 20' 19,68'' N / 6° 35' 7,08'' E

1. DEZEMBER